

# B250011

# SX003



- ▶ 主要技术特性 (Main Specifications)
- ▶ 适用导线规格 (Applicable wire) : AWG32#~24#
- ▶ 适用基板厚度 (Applicable PC board thickness) : 1.2mm~1.6mm
- ▶ 温度范围 (Temperature range) : -25°C~+85°C
- ▶ 额定电压 (Voltage rating) : 250V AC, DC
- ▶ 额定电流 (Current rating) : 2A AC, DC
- ▶ 接触电阻 (Contact resistance) :  $\leq 0.02\Omega$
- ▶ 绝缘电阻 (Insulation resistance) :  $\geq 1000M\Omega$
- ▶ 耐压 (Withstanding voltage) : 1000V AC/minute

### 材料及电镀规格 Material and Finish

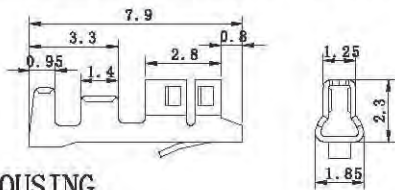
型号 Type	材料 Material	材料厚度 Material Thickness	电镀规格 Finish
插座 WAFER	塑胶 HOUSING	PA66 UL94V-0	N/A
	针 PIN	黄铜 Brass	镀锡 Tin-plated
孔座 HOUSING	PA66 UL94V-0	—	N/A
端子 TERMINAL	磷青铜 Phosphor bronze	0.2mm	镀锡 Tin-plated

### 产品尺寸图 Product size chart

 单位: mm 一般公差:  $\pm 0.20$ 

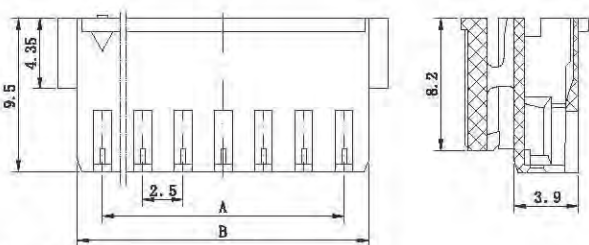
### TERMINAL

B250011-4-1 SX003-T1 YST025-L3



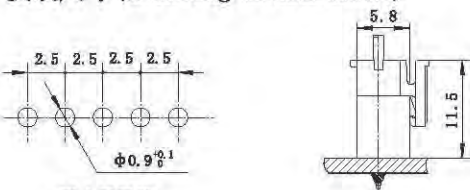
### HOUSING

B250011-2



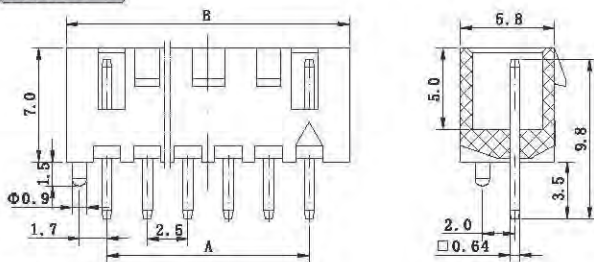
### HOUSING

### 安装尺寸 (Mounting measurement)



### WAFER

B250011-1



### WAFER

极数 Circuits	型号 Type	尺寸 (Dimensions) mm		备注型号 P. S. Type
		A	B	
2	B250011-2-02	2.5	5.5	SX003-02Y
3	B250011-2-03	5.0	8.0	SX003-03Y
4	B250011-2-04	7.5	10.5	SX003-04Y
5	B250011-2-05	10.0	13.0	SX003-05Y
6	B250011-2-06	12.5	15.5	SX003-06Y
7	B250011-2-07	15.0	18.0	SX003-07Y
8	B250011-2-08	17.5	20.5	SX003-08Y
9	B250011-2-09	20.0	23.0	SX003-09Y
10	B250011-2-10	22.5	25.5	SX003-10Y
11	B250011-2-11	25.0	28.0	SX003-11Y
15	B250011-2-15	35.0	38.0	SX003-15Y

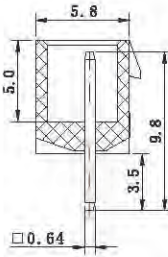
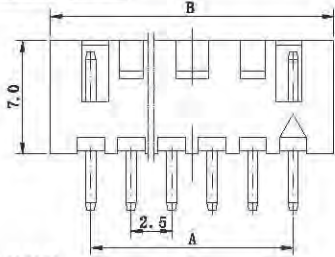
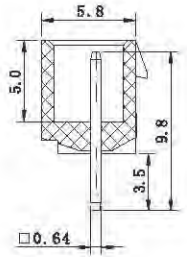
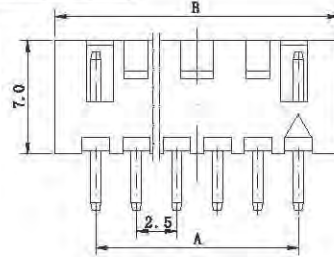
极数 Circuits	型号 Type	尺寸 (Dimensions) mm		备注型号 P. S. Type
		A	B	
2	B250011-1-02	2.5	7.5	SX003-02A
3	B250011-1-03	5.0	10.0	SX003-03A
4	B250011-1-04	7.5	12.5	SX003-04A
5	B250011-1-05	10.0	15.0	SX003-05A
6	B250011-1-06	12.5	17.5	SX003-06A
7	B250011-1-07	15.0	20.0	SX003-07A
8	B250011-1-08	17.5	22.5	SX003-08A
9	B250011-1-09	20.0	25.0	SX003-09A
10	B250011-1-10	22.5	27.5	SX003-10A
11	B250011-1-11	25.0	30.0	SX003-11A
15	B250011-1-15	35.0	40.0	SX003-15A



# B250011

# SX003

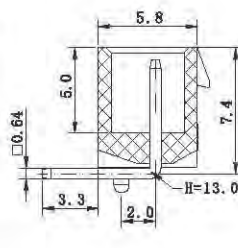
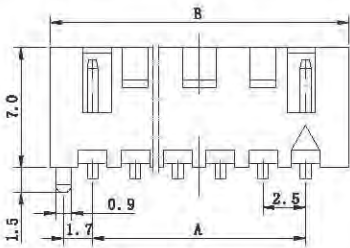
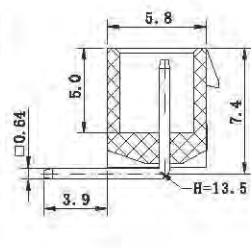
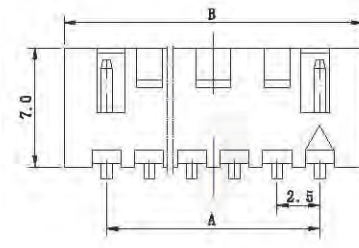
## WAFER

**B250011-1-\*A**

**B250011-1-\*B**


## WAFER

极数 Circuits	型号 Type		尺寸(Dimensions)mm		备注型号 P. S. Type	
			A	B		
2	B250011-1-02A	B250011-1-02B	2.5	7.5	SX003-02A1	SX003-02A2
3	B250011-1-03A	B250011-1-03B	5.0	10.0	SX003-03A1	SX003-03A2
4	B250011-1-04A	B250011-1-04B	7.5	12.5	SX003-04A1	SX003-04A2
5	B250011-1-05A	B250011-1-05B	10.0	15.0	SX003-05A1	SX003-05A2
6	B250011-1-06A	B250011-1-06B	12.5	17.5	SX003-06A1	SX003-06A2
7	B250011-1-07A	B250011-1-07B	15.0	20.0	SX003-07A1	SX003-07A2
8	B250011-1-08A	B250011-1-08B	17.5	22.5	SX003-08A1	SX003-08A2
9	B250011-1-09A	B250011-1-09B	20.0	25.0	SX003-09A1	SX003-09A2
10	B250011-1-10A	B250011-1-10B	22.5	27.5	SX003-10A1	SX003-10A2
11	B250011-1-11A	B250011-1-11B	25.0	30.0	SX003-11A1	SX003-11A2
15	B250011-1-15A	B250011-1-15B	35.0	40.0	SX003-15A1	SX003-15A2

## WAFER

**B250011-1W-\***

**B250011-1W-\*A**


## WAFER

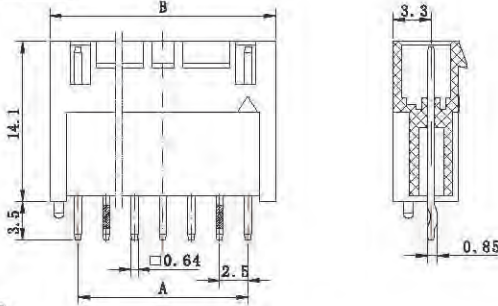
极数 Circuits	型号 Type		尺寸(Dimensions)mm		备注型号 P. S. Type	
			A	B		
2	B250011-1W-02	B250011-1W-02A	2.5	7.5	SX003-02AW	SX003-02AW1
3	B250011-1W-03	B250011-1W-03A	5.0	10.0	SX003-03AW	SX003-03AW1
4	B250011-1W-04	B250011-1W-04A	7.5	12.5	SX003-04AW	SX003-04AW1
5	B250011-1W-05	B250011-1W-05A	10.0	15.0	SX003-05AW	SX003-05AW1
6	B250011-1W-06	B250011-1W-06A	12.5	17.5	SX003-06AW	SX003-06AW1
7	B250011-1W-07	B250011-1W-07A	15.0	20.0	SX003-07AW	SX003-07AW1
8	B250011-1W-08	B250011-1W-08A	17.5	22.5	SX003-08AW	SX003-08AW1
9	B250011-1W-09	B250011-1W-09A	20.0	25.0	SX003-09AW	SX003-09AW1
10	B250011-1W-10	B250011-1W-10A	22.5	27.5	SX003-10AW	SX003-10AW1
11	B250011-1W-11	B250011-1W-11A	25.0	30.0	SX003-11AW	SX003-11AW1
15	B250011-1W-15	B250011-1W-15A	35.0	40.0	SX003-15AW	SX003-15AW1



# B250011

# SX003

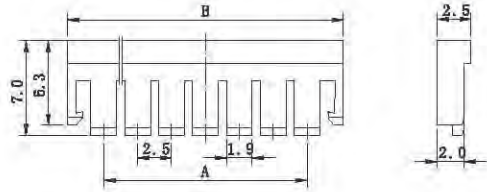
## WAFER

**B250011-1-\*D**


## WAFER

极数 Circuits	型号 Type	尺寸(Dimensions)mm		备注型号 P. S. Type
		A	B	
2	B250011-1-02D	2.5	7.5	SX003-02AD
3	B250011-1-03D	5.0	10.0	SX003-03AD
4	B250011-1-04D	7.5	12.5	SX003-04AD
5	B250011-1-05D	10.0	15.0	SX003-05AD
6	B250011-1-06D	12.5	17.5	SX003-06AD
7	B250011-1-07D	15.0	20.0	SX003-07AD
8	B250011-1-08D	17.5	22.5	SX003-08AD
9	B250011-1-09D	20.0	25.0	SX003-09AD
10	B250011-1-10D	22.5	27.5	SX003-10AD
11	B250011-1-11D	25.0	30.0	SX003-11AD
15	B250011-1-15D	35.0	40.0	SX003-15AD

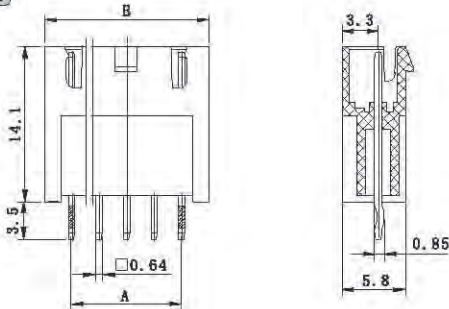
## HOUSING

**B250011-5**


## HOUSING

极数 Circuits	型号 Type	尺寸(Dimensions)mm		备注型号 P. S. Type
		A	B	
2	B250011-5-02	2.5	7.9	SX003-02RT
3	B250011-5-03	5.0	10.4	SX003-03RT
4	B250011-5-04	7.5	12.9	SX003-04RT
5	B250011-5-05	10.0	15.4	SX003-05RT
6	B250011-5-06	12.5	17.9	SX003-06RT
7	B250011-5-07	15.0	20.4	SX003-07RT
8	B250011-5-08	17.5	22.9	SX003-08RT
9	B250011-5-09	20.0	25.4	SX003-09RT
10	B250011-5-10	22.5	27.9	SX003-10RT
11	B250011-5-11	25.0	30.4	SX003-11RT
15	B250011-5-15	35.0	40.4	SX003-15RT

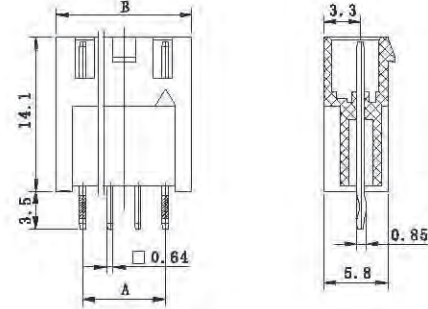
## WAFER

**B250011-1-\*L**


## WAFER

极数 Circuits	型号 Type	尺寸(Dimensions)mm		备注型号 P. S. Type
		A	B	
2	B250011-1-02L	2.5	7.5	SX003-02AL
3	B250011-1-03L	5.0	10.0	SX003-03AL
4	B250011-1-04L	7.5	12.5	SX003-04AL
5	B250011-1-05L	10.0	15.0	SX003-05AL
6	B250011-1-06L	12.5	17.5	SX003-06AL
7	B250011-1-07L	15.0	20.0	SX003-07AL
8	B250011-1-08L	17.5	22.5	SX003-08AL
9	B250011-1-09L	20.0	25.0	SX003-09AL
10	B250011-1-10L	22.5	27.5	SX003-10AL
11	B250011-1-11L	25.0	30.0	SX003-11AL
15	B250011-1-15L	35.0	40.0	SX003-15AL

## HOUSING

**B250011-1-\*D1**


极数 Circuits	型号 Type	尺寸(Dimensions)mm		备注型号 P. S. Type
		A	B	
2	B250011-1-02D1	2.5	7.5	SX003-02AD1
3	B250011-1-03D1	5.0	10.0	SX003-03AD1
4	B250011-1-04D1	7.5	12.5	SX003-04AD1
5	B250011-1-05D1	10.0	15.0	SX003-05AD1
6	B250011-1-06D1	12.5	17.5	SX003-06AD1
7	B250011-1-07D1	15.0	20.0	SX003-07AD1
8	B250011-1-08D1	17.5	22.5	SX003-08AD1
9	B250011-1-09D1	20.0	25.0	SX003-09AD1
10	B250011-1-10D1	22.5	27.5	SX003-10AD1
11	B250011-1-11D1	25.0	30.0	SX003-11AD1
15	B250011-1-15D1	35.0	40.0	SX003-15AD1